



# FACES!

British and  
American  
Portraits



Museum of Fine Arts Boston



17.3266 Thomas Gainsborough, *Mrs. Edmund Morton Pleydell* (detail), about 1765.  
Oil on canvas. 126.4 x 104.8 cm. Robert Dawson Evans Collection.

# Faces! British and American Portraits

**Organized by:** Frederick Ilchman, Mrs. Russell W. Baker Curator of  
Paintings, Art of Europe  
Museum of Fine Arts, Boston

**Number of objects** Approximately 100 objects

**Contact** Traveling Exhibitions  
Phone: 617-369-3201  
E-mail: [travelingexhibitions@mfa.org](mailto:travelingexhibitions@mfa.org)  
Web: [mfa.org/travelingexhibitions](http://mfa.org/travelingexhibitions)



## FACES! British and American Portraits

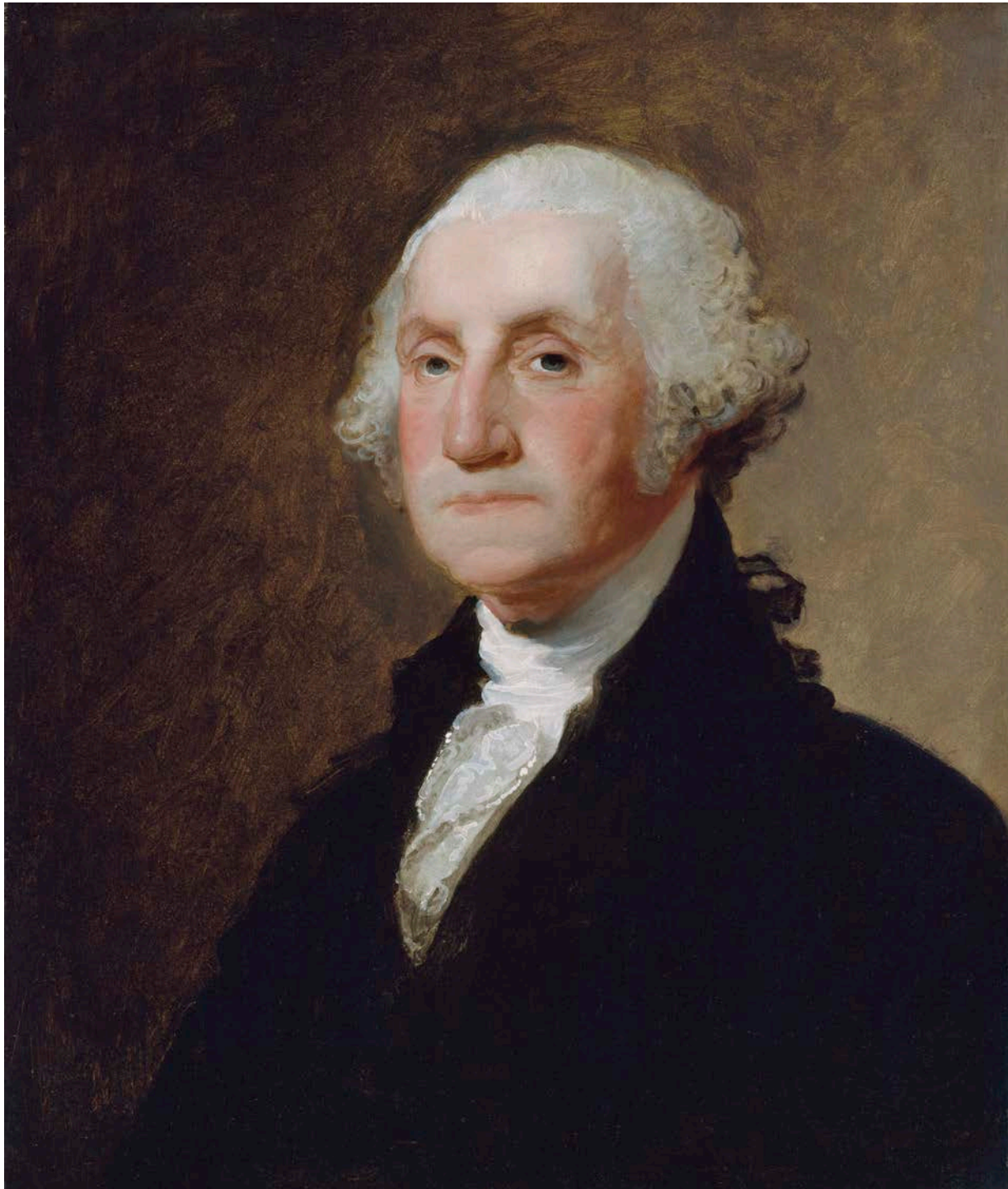


39.248 John Singleton Copley, *Elizabeth Ross (Mrs. William Tyng)*, about 1766. Oil on canvas. 127 x 101.6 cm. The M. and M. Karolik Collection of Eighteenth-Century American Arts.

More than any other art form, portraits reveal how we wish to be remembered. This exhibition explores identity, fashion, and social ambition on both sides of the Atlantic, from the 18th century to the glamorous era of the early 20th century to the present. Portraits by outstanding painters such as Thomas Gainsborough and John Singleton Copley, and photographers including Julia Margaret Cameron and Yousuf Karsh, present dramatic cultural changes over 250 years. The exhibition features famous faces of each age, from George Washington to Madonna.

**Final object checklist pending approval.**

## FACES! British and American Portraits



29.788 Gilbert Stuart, *George Washington*, 1810. Oil on panel. 66.04 x 54.93 cm.  
Bequest of George Nixon Black.

## FACES! British and American Portraits



2014.996 Jamie Wyeth, *Portrait of John F. Kennedy*, 1967. Oil on canvas.  
40.6 x 73.7 cm. Partial gift of Phyllis and Jamie Wyeth and partial purchase from  
the Charles H. Bayley Picture and Painting Fund, Emily L. Ainsley Fund, and  
Robert Jordan Fund. © Jamie Wyeth.



## FACES! British and American Portraits



61.962 George Romney, *John Thornhill (1773–1841) as a Boy*,  
about 1784–85. Oil on canvas. 186.7 x 121 cm.  
Given in memory of Governor Alvan T. Fuller by the Fuller Foundation.

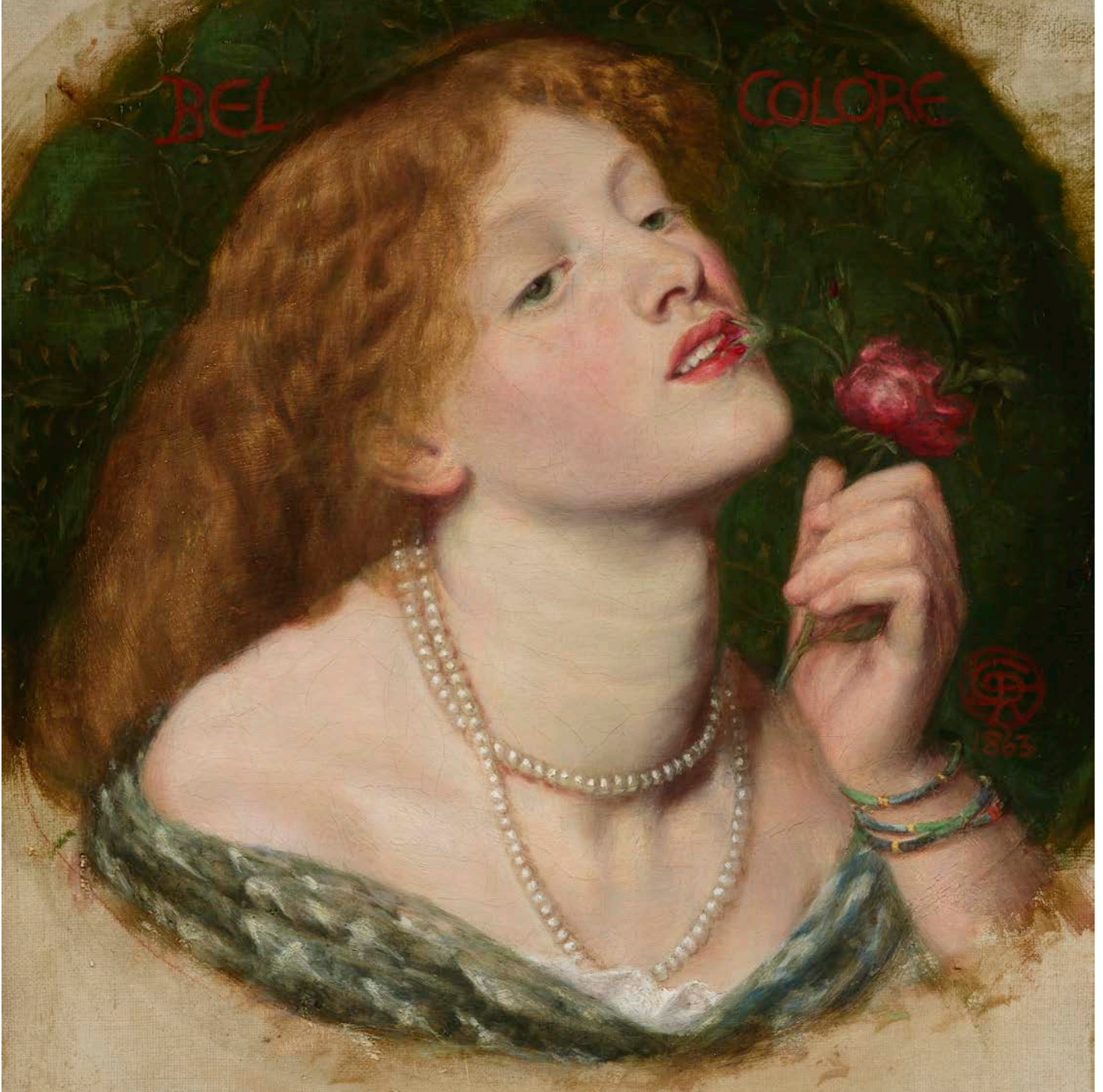
## FACES! British and American Portraits



1983.496 Alice Neel, *Linda Nochlin and Daisy*, 1973.  
Oil on canvas. 141.9 x 111.8 cm. Seth K. Sweetser Fund.  
© The Estate of Alice Neel. Courtesy David Zwirner, New York/London.



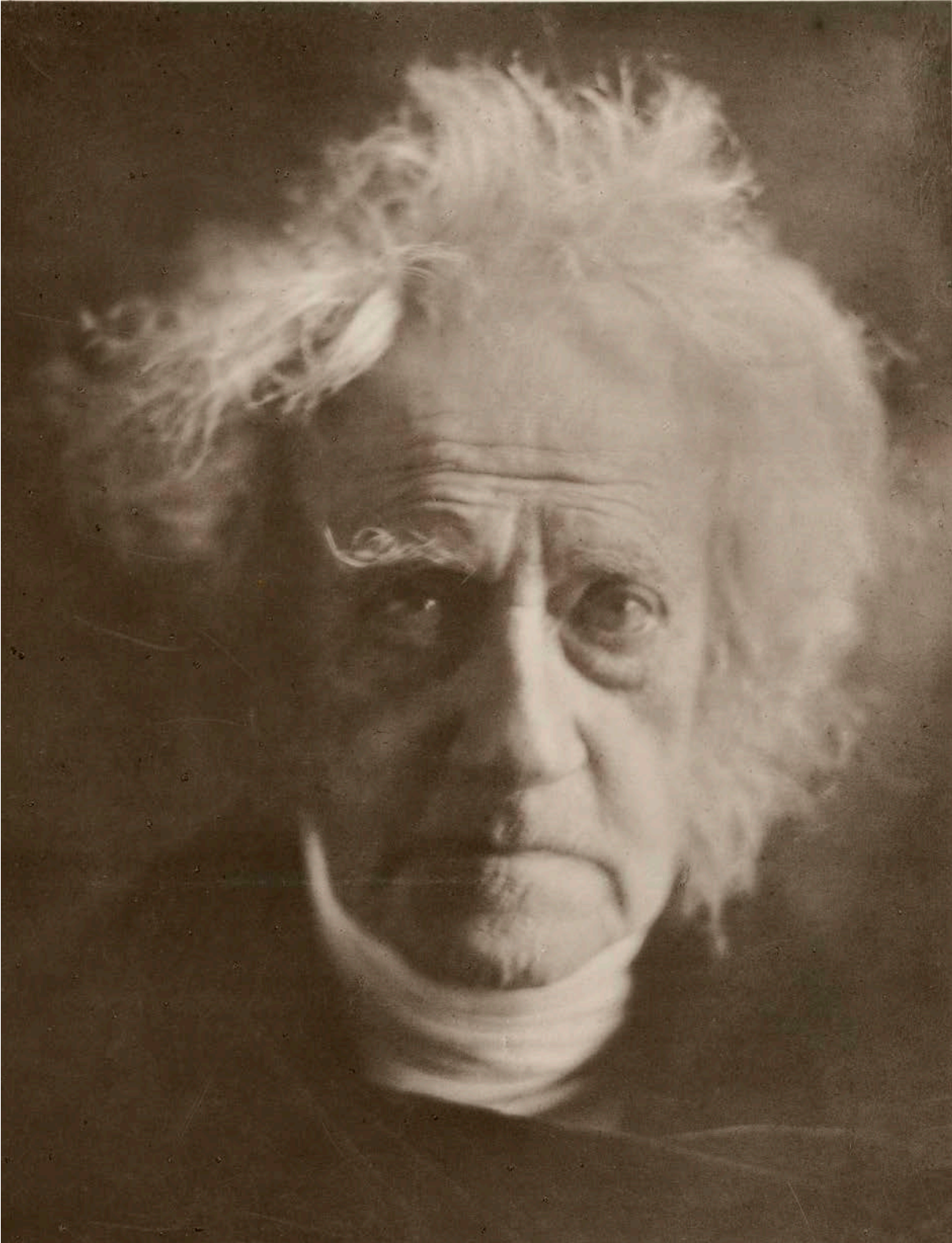
## FACES! British and American Portraits



2015.3323 Dante Gabriel Rossetti, *Belcolore*, 1863. Oil on canvas. 44.1 x 44.1 cm.  
Gift of Dr. Nile Albright and Mrs. Lee Lawrence Albright.



## FACES! British and American Portraits



2009.5063 Julia Margaret Cameron, *Sir John Herschel*, 1860–70.  
Photograph, carbon print or possibly colotype. 30.1 x 23.4 cm.  
Gift of Charles W. Millard III.



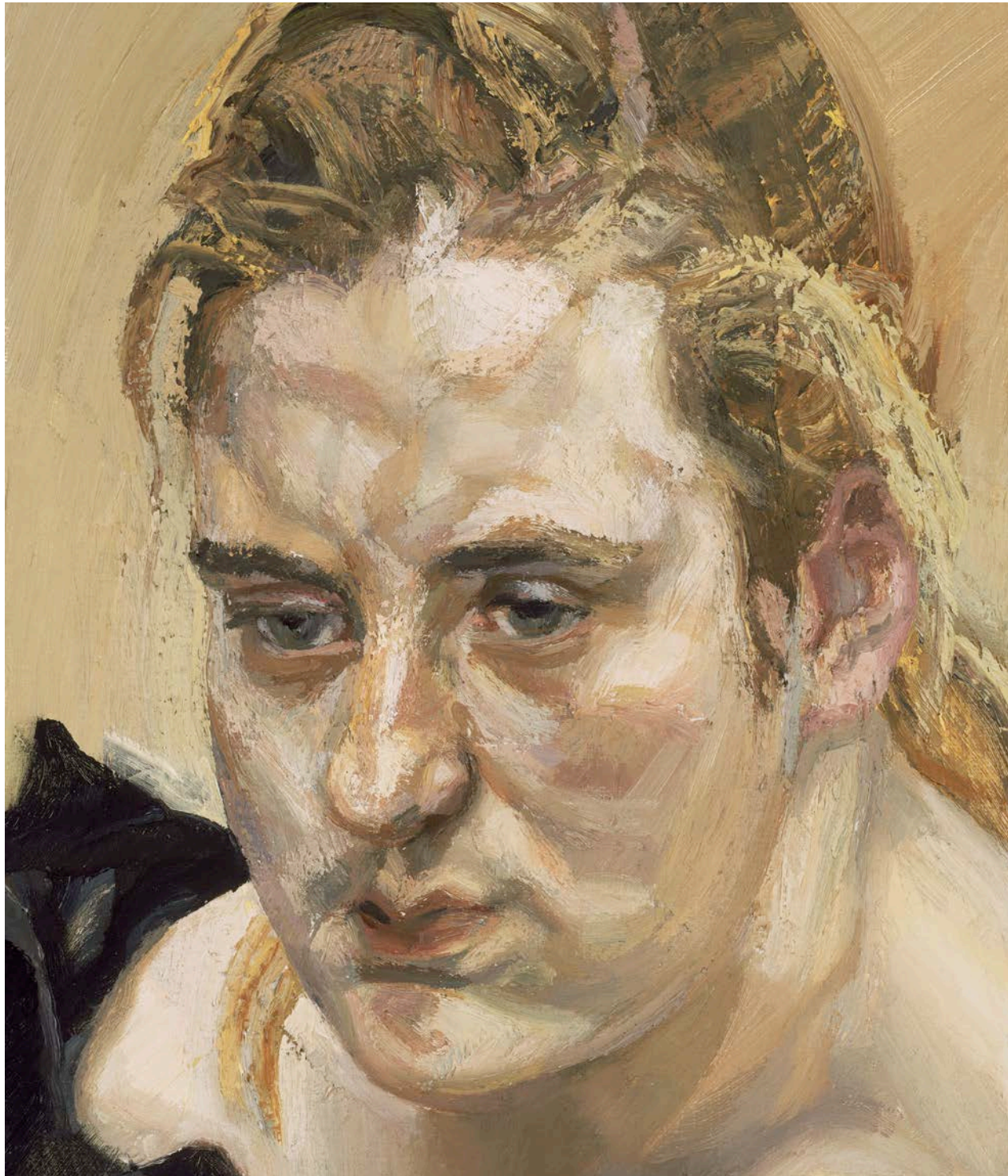
## FACES! British and American Portraits



APP.2015.90 Yousuf Karsh, *Her Majesty Queen Elizabeth II, when Princess Elizabeth*, 1951. Photograph, gelatin silver print. 34 x 42.5 cm.  
Lent by Mrs. Yousuf Karsh, in memory of her husband. © Estate of Yousuf Karsh.



## FACES! British and American Portraits



2003.37 Lucian Freud, *Susie*, 1988. Oil on canvas. 27.3 x 22.2 cm.  
Melvin Blake and Frank Purnell Collection. © The artist.

## FACES! British and American Portraits



2009.5300 Herb Ritts, *Madonna VII*, 1990. Photograph, gelatin silver print.  
47.3 x 38.3 cm. Gift of Herb Ritts Foundation. © Herb Ritts Foundation.



All images copyright Museum of Fine Arts, Boston, unless otherwise noted.

© 2018 Museum of Fine Arts, Boston

Final object checklist pending approval.

## Traveling Exhibitions

**Contact us** Phone: 617-369-3201  
E-mail: [travelingexhibitions@mfa.org](mailto:travelingexhibitions@mfa.org)  
Web: [mfa.org/travelingexhibitions](http://mfa.org/travelingexhibitions)



**Museum of Fine Arts** Boston